


41 LEVADA CALHETA-PONTA DO PARGO

See also maps on pages 120 and 124-125, and the touring map

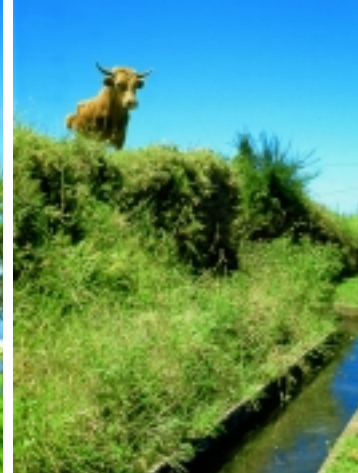
Grade: easy **Distance:** as individual walk suggestions

Equipment: stout shoes, sunhat, picnic, water

How to get there:  142 or  to Raposeira

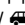
To return:  back to your base or your car; see opposite




The Levada Calheta-Ponta do Pargo (see notes on page 123) is just perfect for strolling. As it contours along the sun-drenched plains above the coast, it gives you superb views up to the Paúl da Serra, where scudding clouds create an ever-changing mosaic on the hillsides. Gorgeous all year round, these walks are at their best in high summer, when the levada is full to brimming, and the agapanthus and hydrangeas are in bloom (in winter, the levada is sometimes empty). You stroll under pine and eucalyptus, by ferny glens and banks of lilies. While there is ample shade, much of the route is exposed; adequate sun protection is essential.



Walks 34 and 41: the Levada Calheta-Ponta do Pargo in July; you'll be a source of some curiosity to the locals!

Walk suggestions: Both of our suggestions begin below (just south of) Raposeira church, but you can join the **Levada Calheta-Ponta do Pargo** at other convenient points. The touring map shows you at a glance where the levada crosses the road. If you are driving, there are several places to park along the quiet ER101, for example 2km west of Raposeira church, at the turn-off down to Fajã da Ovelha. Perhaps combine your levada walk with a visit to the fine viewpoint over Paúl do Mar at Raposeira (2km return), or just amble down one of the grassy trails overlooking the lighthouse at Ponta do Pargo.

1 Follow the levada east from Raposeira. You can leave it for the ER222 at Prazeres (4.7km/3mi; 1h15min), Lombo dos Moinhos (9km/5.6mi; 2h15min), or the power station above Calheta (20.5km/12.7mi; 5h). Beyond the power station you could join Walk 35 and continue to Loreto (26.5km/16.5mi; 6h30min; map pages 124-125, notes page 125). This eastern stretch is only served by  142 at time of writing.

2 Head west from Raposeira (see below and touring map; see also Walk 34 on page 121). You cross the road at Lombada dos Marinheiros (9km/5.6mi; 2h15min;  80, 142), but must descend to Ponta do Pargo (15km/9.3mi; 3h45min;  80, 142, 150). The levada ends above Cabo, on the route of Walk 34 (21.5km/13.3mi; 5h20min;  80, 142, 150).

